

# Aurele Polo Pendant S - #1390



18W



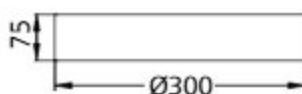
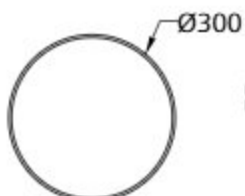
1560lm



3000K

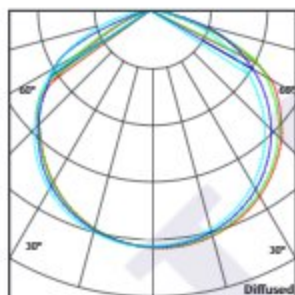


Diffused



## Photometric Data

Light source	LED - Mid Power	Light output ratio	66%
Power (W)	18W	Color rendering index (Ra)	> 92
Delivered lumens	1560lm	Color rendering index (R9)	> 50
Source lumens	2358lm	Binning MacAdam	< 3 SDCM
Colour temperature (K)	3000K	LED life	L90 B10 Tj75°C
Luminaire efficacy	86.66lm/W	UGR	< 19
Beam angle	Diffused	Operating temperature	-20°C to + 50°C
Cutoff angle	NA	Light distribution	Direct - Diffused

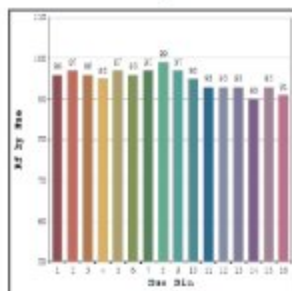


## Technical Data

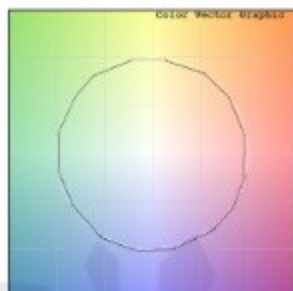
Mounting detail	Ceiling - Pendant	Product weight	650gms
Fixing detail	Hanging Wire	Safety class	III
Orientation	Fixed	Insulation class	III
IP rating	IP20	LED current (mA)	500mA
Glow wire test	850°	Voltage	AC230V
Trim material	NA	Forward voltage	DC60V
Heatsink material	Aluminium	Driver	CC - Remote

## Photometric Graphs

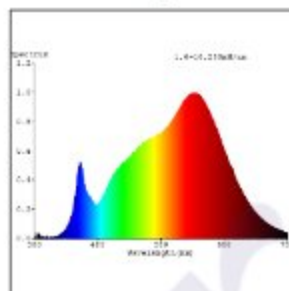
Hue Bin vs Rf Graph



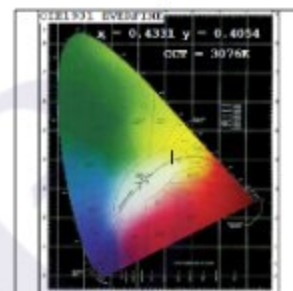
Color Vector Graph



Spectrum vs Wavelength Graph



CIE Chromaticity Graph



## Finish Options

### Trim Finish

- Matt White
- Matt Black
- Custom RAL Color

### Body Finish

- Matt White
- Matt Black

## Dimming Options



Constant Current Driver  
18w 500mA 220-240V  
Non Dimmable



Constant Current Driver  
18w 500mA 220-240V  
Triac Dimmable



Constant Current Driver  
18w 500mA 220-240V  
Analog 0-10V / 1-10V Dimmable



Constant Current Driver  
18w 500mA 220-240V  
Dali Dimmable

L'azure constantly strives to improve our products using the latest technological advancements in the industry.  
Due to which the data mentioned in the data sheet is subject to change without prior notice.