

# Recessed M - Brick - #2134



48W



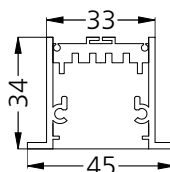
4296lm



2700K

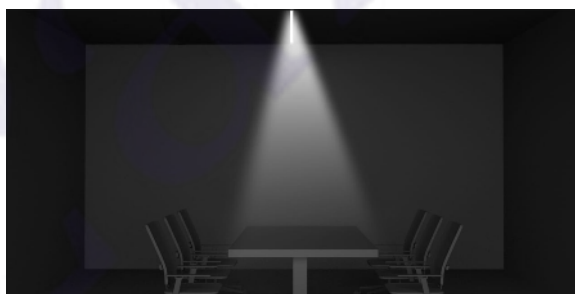
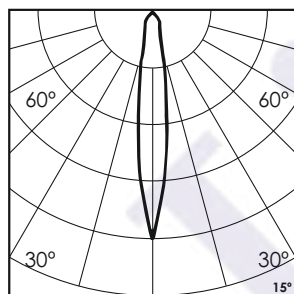


15°



## Photometric Data

Light source	LED - High Power	Light output ratio	67%
Power (W)	48W	Color rendering index (Ra)	>92
Delivered lumens	4296lm	Color rendering index (R9)	>50
Source lumens	6360lm	Binning MacAdam	<3 SDCM
Colour temperature (K)	2700K	LED life	L90 B10 Tj75°C
Luminaire efficacy	89.5lm/W	UGR	<16
Beam angle	15°	Operating temperature	-20°C to +50°C
Cutoff angle	NA	Light distribution	Direct - Symmetric

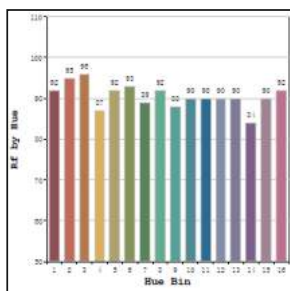


## Technical Data

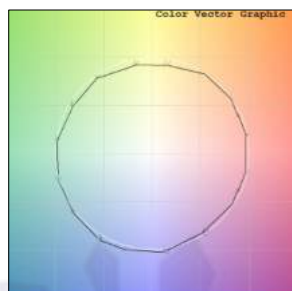
Mounting detail	Recessed	Product weight	1847gms Per 2389MM
Fixing detail	Dual tension spring	Safety class	III
Orientation	Fixed	Insulation class	III
IP rating	IP20	LED current (mA)	Depend on length
Glow wire test	850°	Voltage	AC230V
Trim material	Aluminum	Forward voltage	DC24V
Heatsink material	Aluminum Extrusion	Driver	CV - Remote

## Photometric Graphs

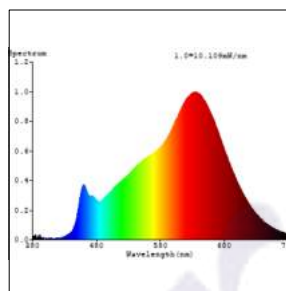
Hue Bin vs Rf Graph



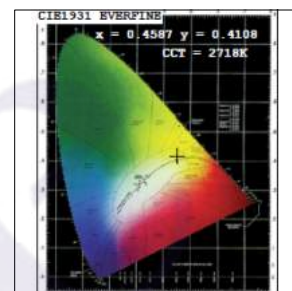
Color Vector Graph



Spectrum vs Wavelength Graph



CIE Chromaticity Graph



## Finish Options

### Trim Finish

- Matt White
- Matt Black
- Custom RAL Color

### Reflector Finish

- Specular
- Pearl Black

## Dimming Options



Constant Voltage Driver  
75w DC24V  
Non Dimmable



Constant Voltage Driver  
75w DC24V  
Triac Dimmable



Constant Voltage Driver  
75w DC24V  
Analog 0-10V / 1-10V Dimmable



Constant Voltage Driver  
75w DC24V  
Dali Dimmable

## Note :-

- Although the maximum capacity of the Modules is 10W/133mm for Numinous M, the maximum capacity that the profile in which the modules are placed is 20W/m for Numinous M profile.
- The standard lengths for the Numinous Recessed M fixtures is 2389mm including the endcaps. Each fixture of length 2389mm contains 18 pieces of modules which are placed side by side in the Numinous Recessed M Profile. Kindly note - there is no gap in between the modules.

L'azure constantly strives to improve our products using the latest technological advancements in the industry. Due to which the data mentioned in the data sheet is subject to change without prior notice.