

# Hyeya Surface - Round XL - #1369



22W



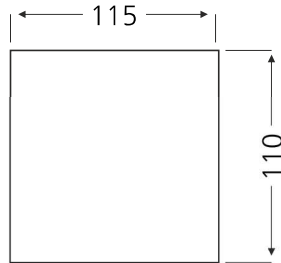
1605lm



3000K

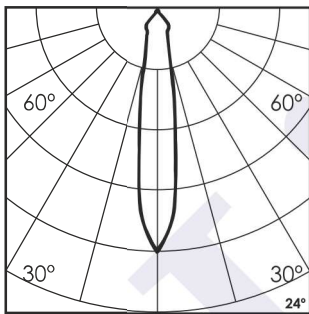


24°



## Photometric Data

Light source	LED - Array	Light output ratio	62%
Power (W)	22W	Color rendering index (Ra)	>95
Delivered lumens	1605lm	Color rendering index (R9)	>85
Source lumens	2525lm	Binning MacAdam	<2 SDCM
Colour temperature (K)	3000K	LED life	L90 B10 Tj75°C
Luminaire efficacy	72.95lm/W	UGR	<19
Beam angle	24°	Operating temperature	-20°C to +50°C
Cutoff angle	NA	Light distribution	Direct - Symmetric

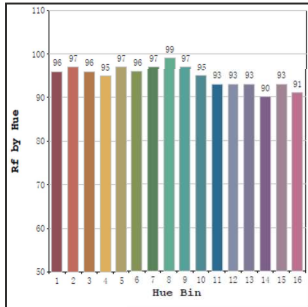


## Technical Data

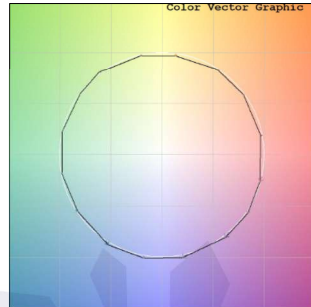
Mounting detail	Ceiling - Surface	Product weight	1404gms
Fixing detail	Mounting with Screw	Safety class	III
Orientation	Fixed	Insulation class	III
IP rating	IP44	LED current (mA)	750mA
Glow wire test	850°	Voltage	AC230V
Trim material	NA	Forward voltage	DC36V
Heatsink material	Diecast alm.	Driver	In-built

Photometric Graphs

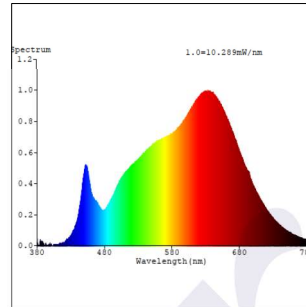
Hue Bin vs Rf Graph



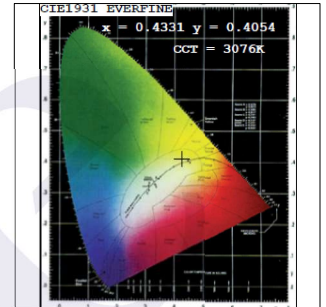
Color Vector Graph



Spectrum vs Wavelength Graph



CIE Chromaticity Graph



Finish Options

Body Finish

- Matt White
- Matt Black
- Custom RAL Color

Reflector Finish

- Matt White
- Matt Black
- Specular
- Pearl Black
- Matt Silver
- Matt Gold

Dimming Options



Constant Current Driver  
22w 750mA 220-240V  
Non Dimmable



Constant Current Driver  
22w 750mA 220-240V  
Triac Dimmable



Constant Current Driver  
22w 750mA 220-240V  
Analog 0-10V / 1-10V Dimmable



Constant Current Driver  
22w 750mA 220-240V  
Dali Dimmable

L'azure constantly strives to improve our products using the latest technological advancements in the industry. Due to which the data mentioned in the data sheet is subject to change without prior notice.